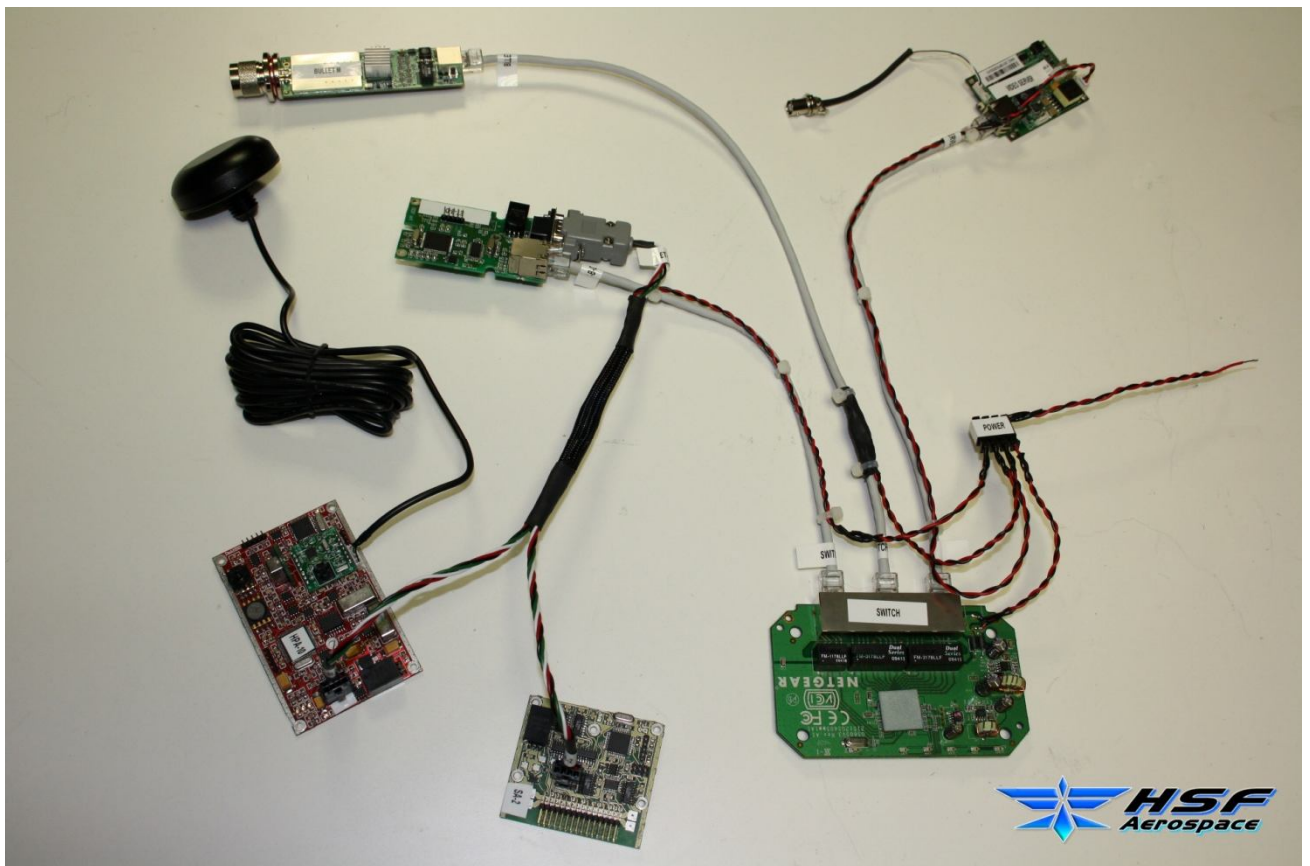
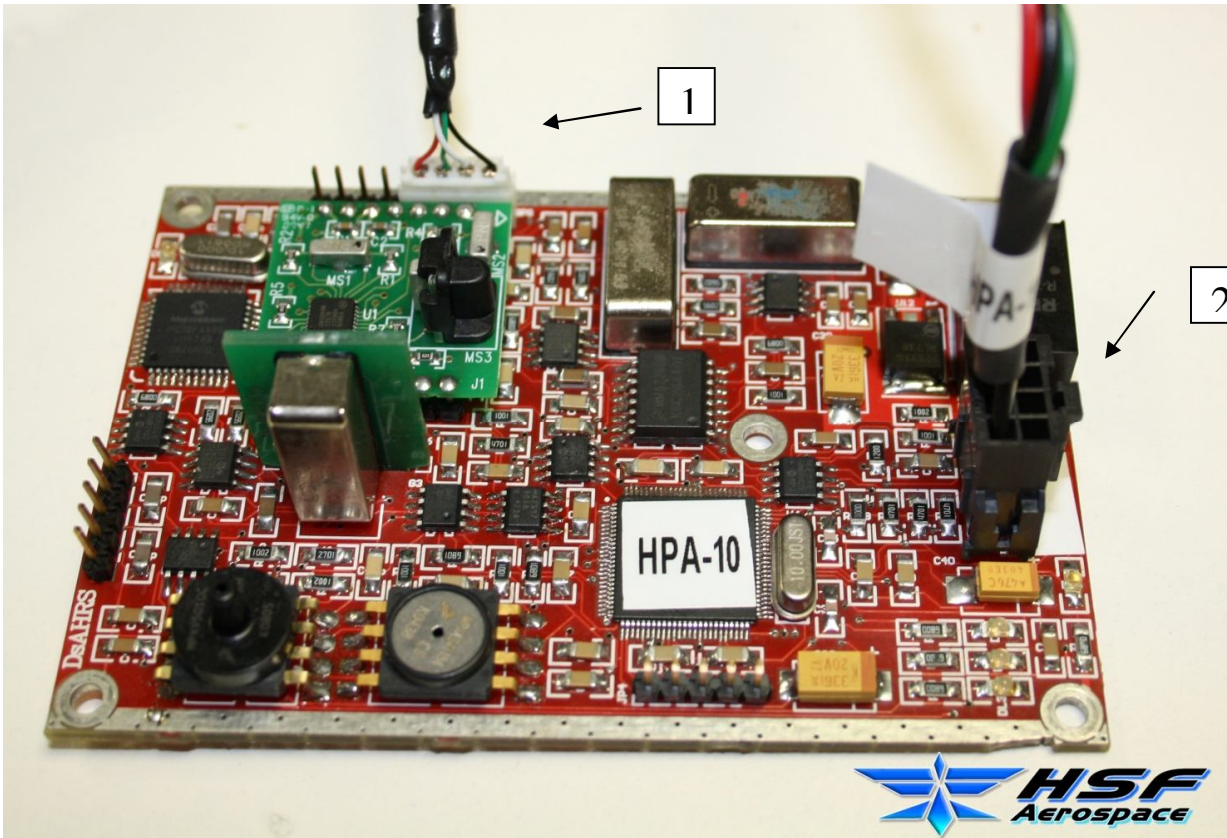


Devices of All System UAV :

- HPA-10
- SA-2
- BULLET
- ETHOCAN
- GPS
- VIDEO SERVER
- SWITCH
- All system cable's



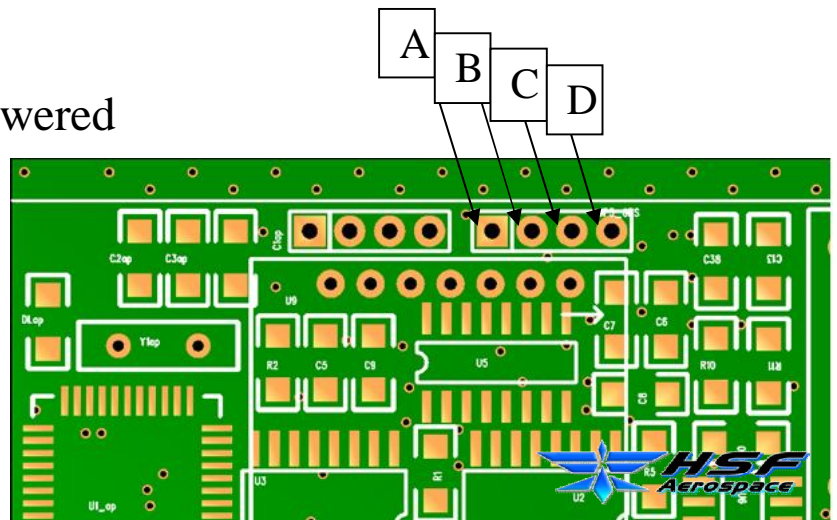
HPA-10 :



In this board must be connect two cable :

1. The cable's GPS
2. The cable's data and powered

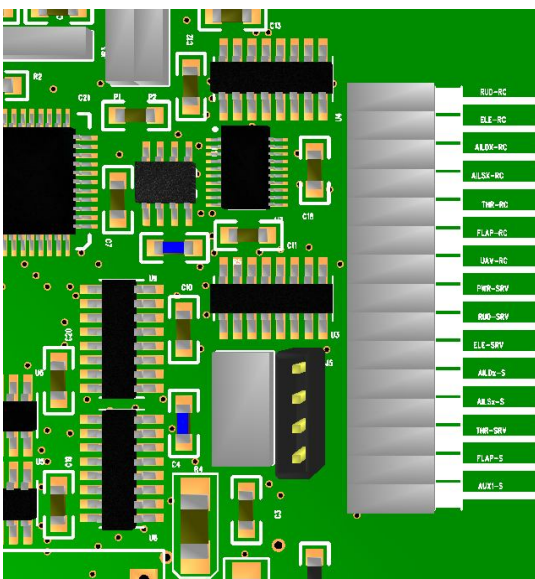
- A. VCC +5V (red cable of GPS)
- B. TX GPS (green cable of GPS)
- C. RX GPS (white cable of GPS)
- D. GND (black cable of GPS)



SA-2 :

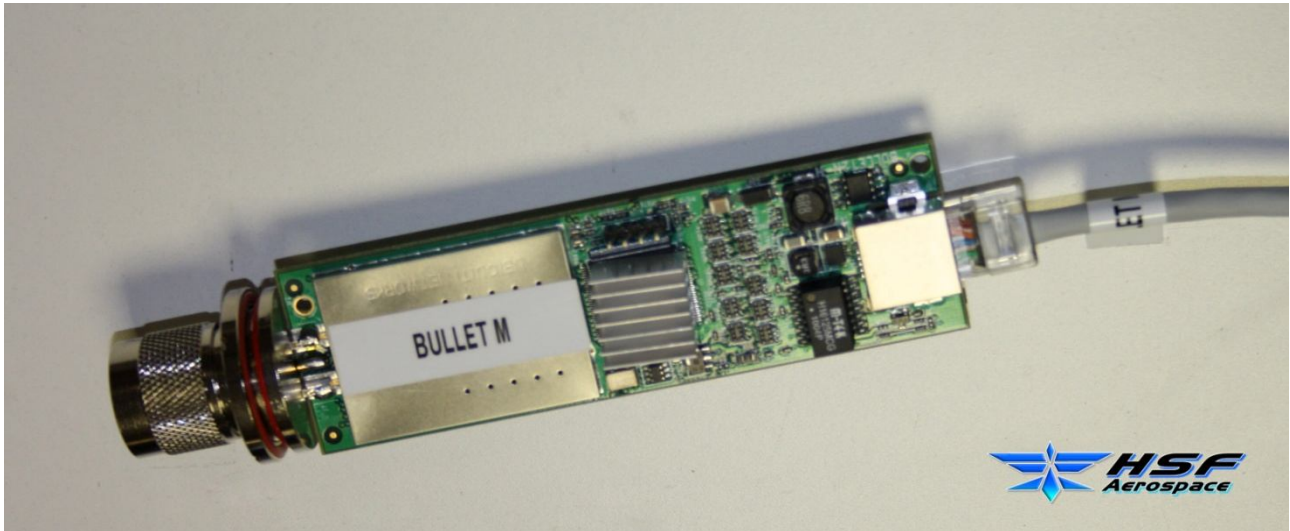


In this board must be connect the cable's data and powered like in picture. After can be connect all of the following cables :



RUD-RC	RUD. INPUT RECEIVER
ELE-RC	ELE. INPUT RECEIVER
AILDX-RC	AIL DX. INPUT RECEIVER
AILSX-RC	AIL SX. INPUT RECEIVER
THR-RC	THR. INPUT RECEIVER
FLAP-RC	FLAP INPUT RECEIVER
UAV-RC	CMD. INPUT RECEIVER
PWR-SRV	POWER SERVO INPUT
RUD-SRV	RUD. OUT SERVO PWM
ELE-SRV	ELE. OUT SERVO PWM
AILDX-SRV	AIL DX. OUT SERVO PWM
AILSX-SRV	AIL SX. OUT SERVO PWM
THR-SRV	THR. OUT SERVO PWM
FLAP-SRV	FLAP OUT SERVO PWM
AUX1-SRV	AUX1 OUT SERVO PWM

BULLET :



This is the device that allows the GDLS . The GDLS consist of two modules:

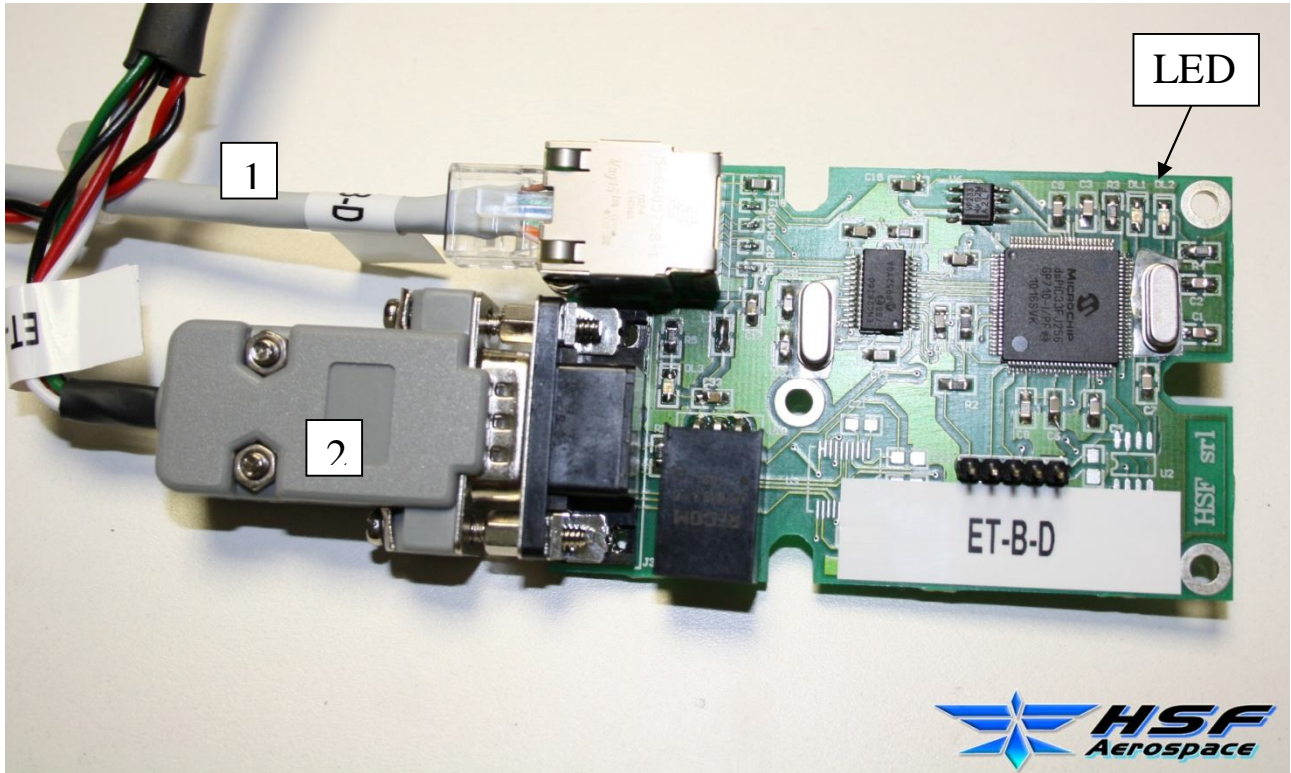
1. Onboard Plane GDLS
2. Ground Station GDLS

They are already configured to connect between them when they turn on the system.

In the specific the device “Onboard Plane” has IP address 192.168.1.10 Bullet-Sky instead the device “Ground Station” has like IP address 192.168.1.20 Bullet-Ground.

Unique cable that must be connected is the cable’s lan like the picture ,but it isn't one standard cable lan.

ETHOCAN :



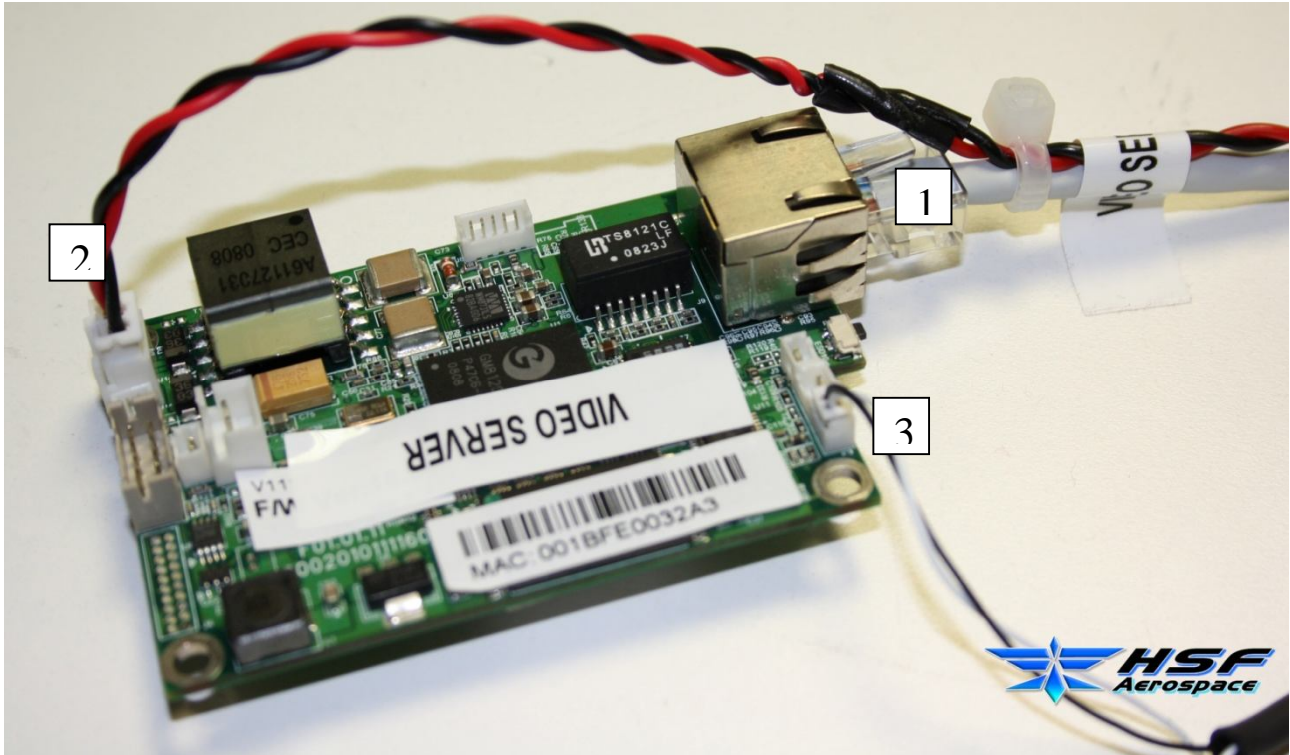
This is device that allows the communication between the boards and the host , using the cable'lan .

1. Cable's lan
2. Serial connector

When run the software BS01 and started the connection ,the LED will stop to flash and it will stay fixed.

Ethocan has own IP address : 192.168.1.50

VIDEO SERVER :



This device is the Video Server. The connections in picture are :

1. Cable's Lan
2. Cable's Powered
3. Cable's Video-In

The software *X-Cam.exe* allows to see the videocamera and then to test the system with successful.

Video Server has own IP address : 192.168.1.80

OTHER INFORMATION :

Now the system is almost ready to run . Why almost?
Without information to power the system ,it cannot turn on !
All system can be powered with 12 V .

DETAIL :

➤ These boards of the system have same range power supply :

- ✓ HPA-10
- ✓ SA-2

Range : 6.5 - 34 V

➤ ETHOCAN has a range power supply

Range : 4.75 - 34 V

➤ VIDEO SERVER and SWITCH must be powered to 12 V.

➤ BULLET can be powered up to 24 V.